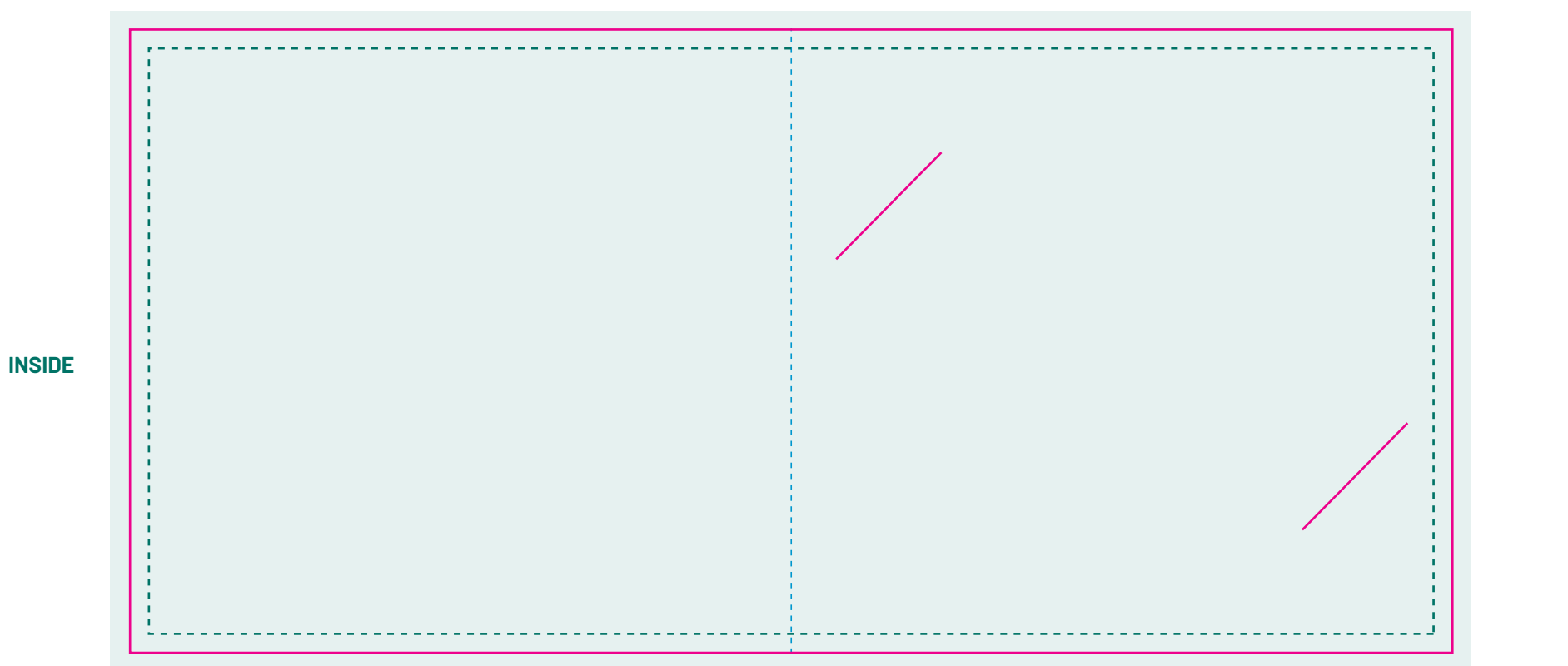
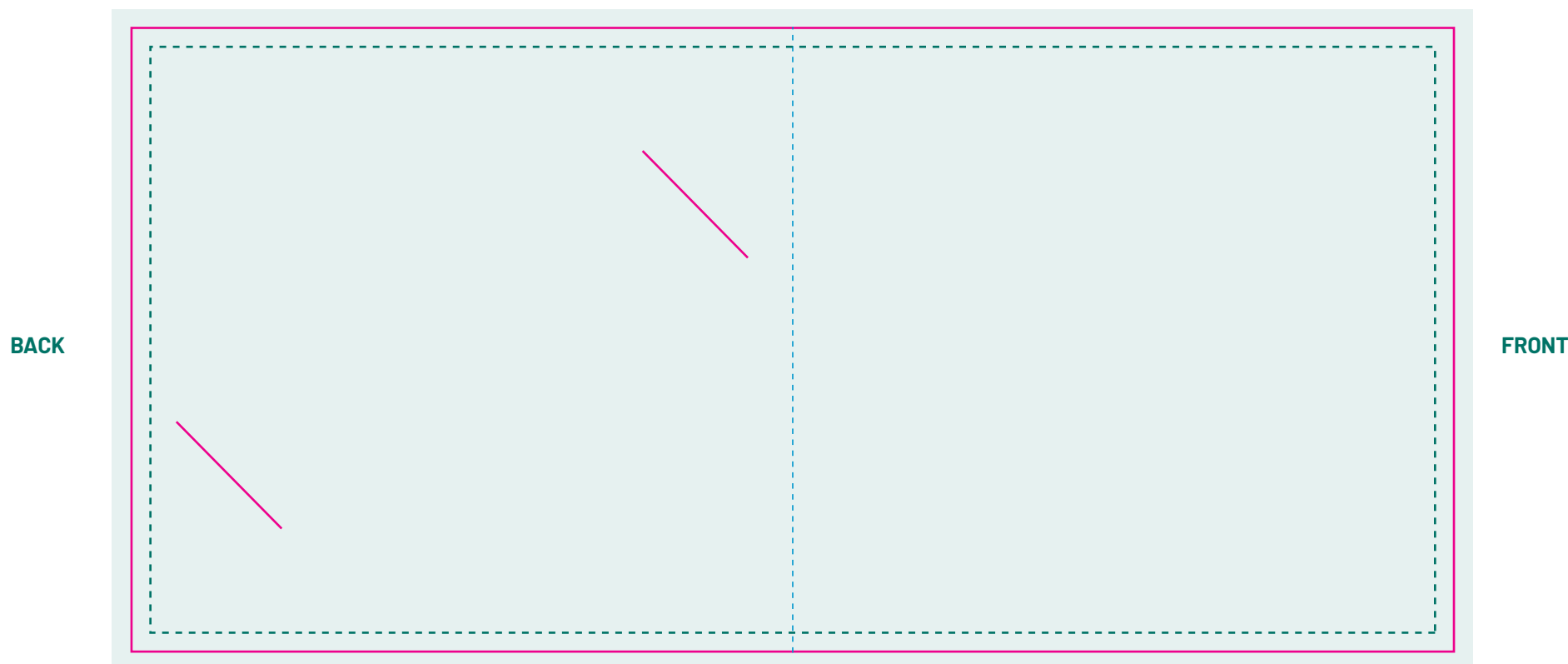


DL Folded Card Holder
Flat Size 210mm x 99mm
Finish Size 105mm x 99m



Artwork is best created in Adobe Illustrator

Please save as **illustrator .ai** or **(high quality print) .pdf**

ARTWORK SPECIFICATIONS

- Create your artwork on the layer named "DESIGN"
- Make Blacks - Rich Black (C:20 M:20 Y:20 K:100)
- Artwork to be in CMYK (Full Colour) or PMS
- Check images are CMYK & 300dpi
- Allow 3mm bleed on artwork, No Crop Marks
- Keep dieline on a separate layer
- Package your working files for print OR
- Ensure all Fonts are outlined & images are embedded



DIELINE



SAFE AREA



FOLD



ARTWORK AREA INCLUDING BLEED