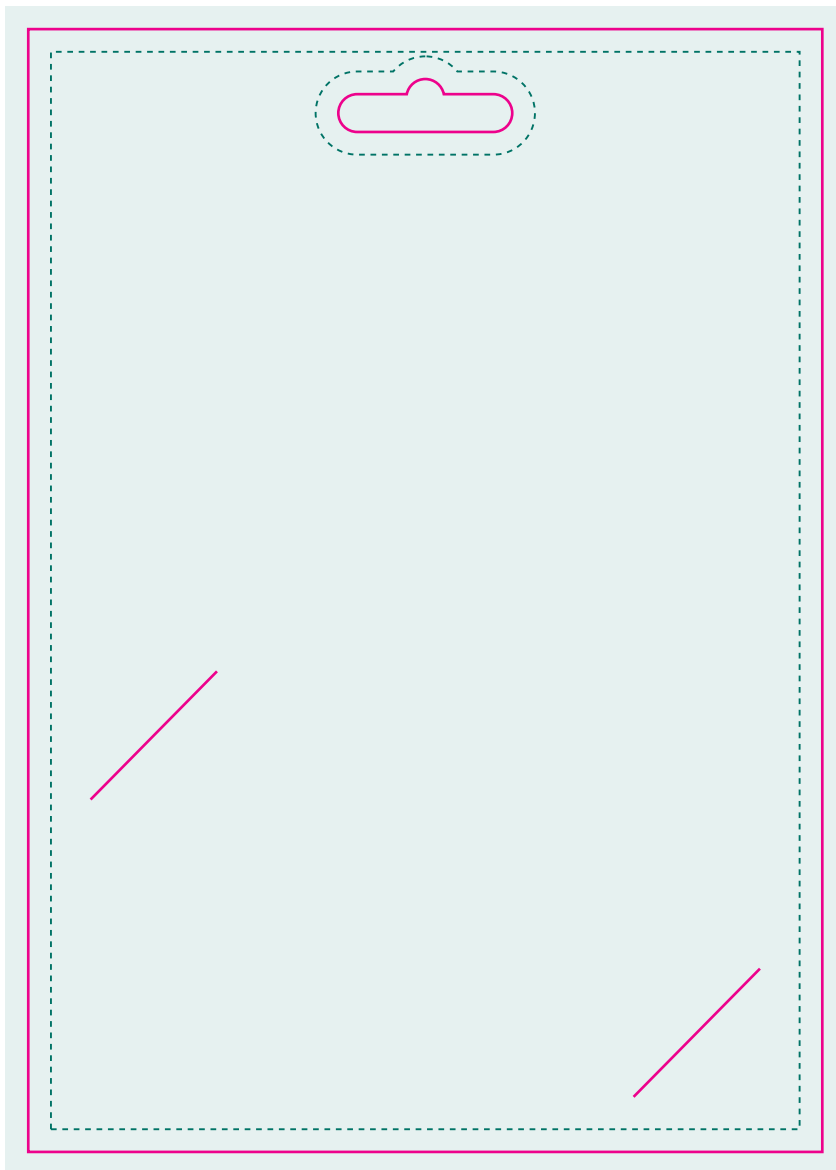


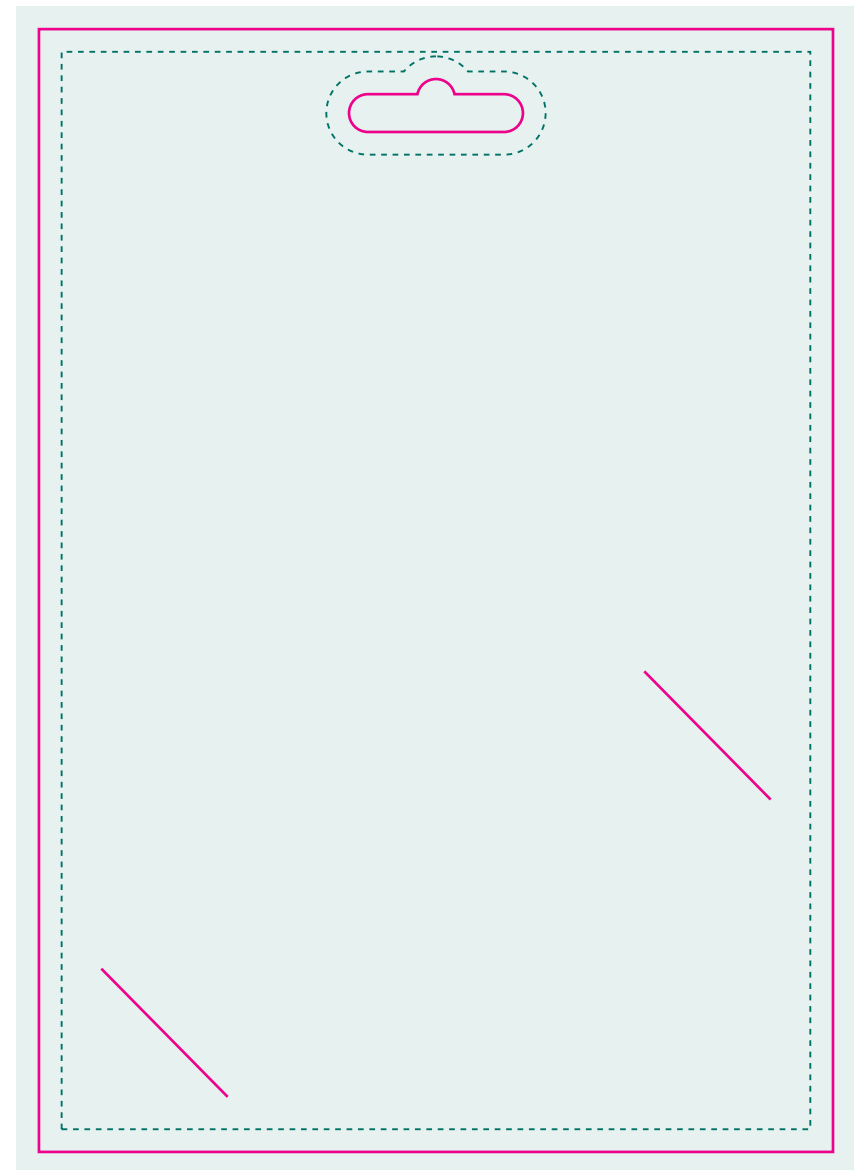
# A6 Retail Backing Card with Slits

Size 148.5mm x 105mm

FRONT



BACK



**Artwork is  
best created in  
Adobe Illustrator**

Please save as **illustrator .ai**  
or **(high quality print) .pdf**

#### ARTWORK SPECIFICATIONS

- Create your artwork on the layer named "DESIGN"
- Make Blacks - Rich Black (C:20 M:20 Y:20 K:100)
- Artwork to be in CMYK (Full Colour) or PMS
- Check images are CMYK & 300dpi
- Allow 3mm bleed on artwork, No Crop Marks
- Keep dieline on a separate layer
- Package your working files for print OR
- Ensure all Fonts are outlined & images are embedded



DIELINE



SAFE AREA



ARTWORK AREA  
INCLUDING BLEED