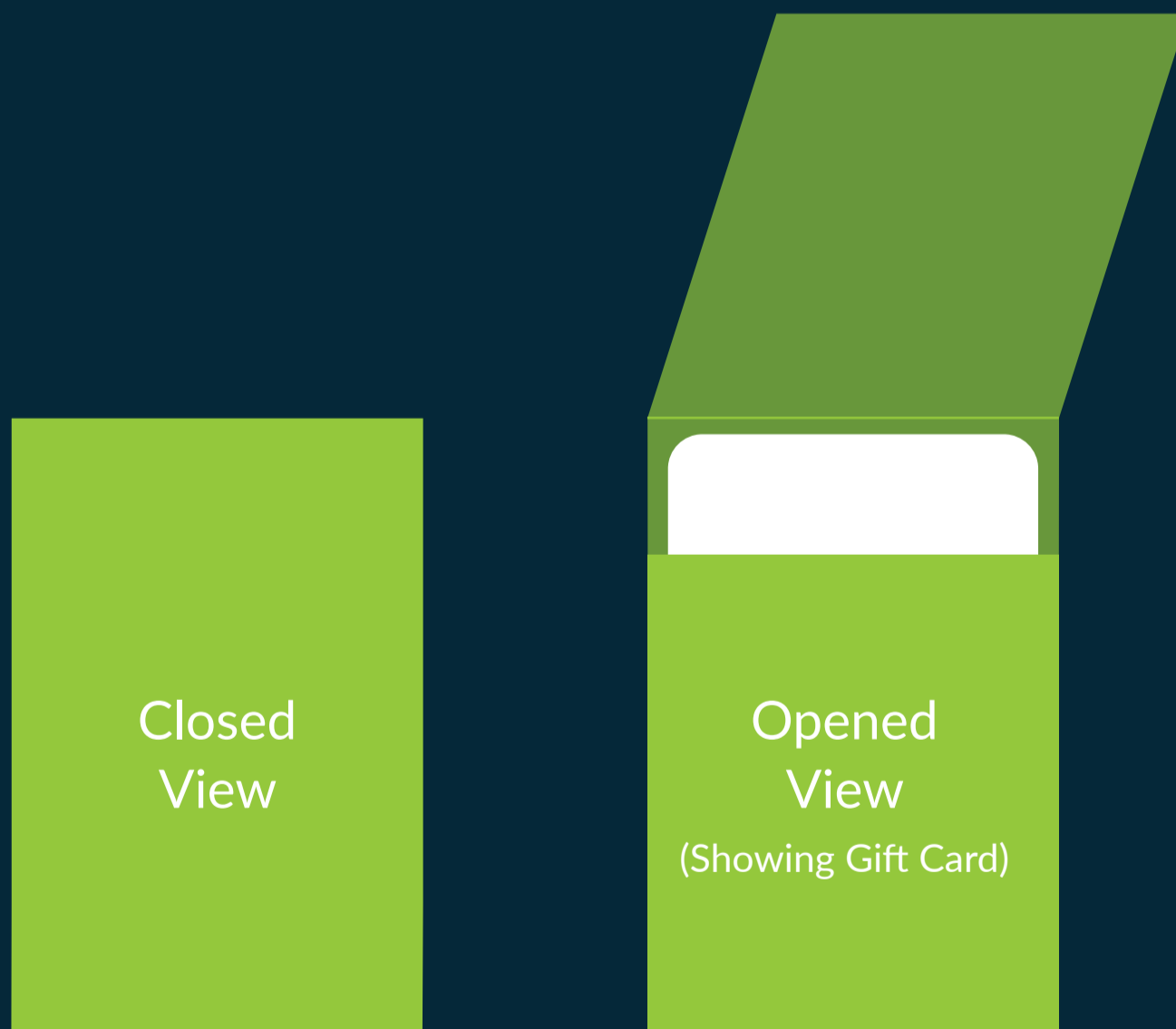




# ARTWORK TEMPLATE

Mini Envelope Card Sleeve

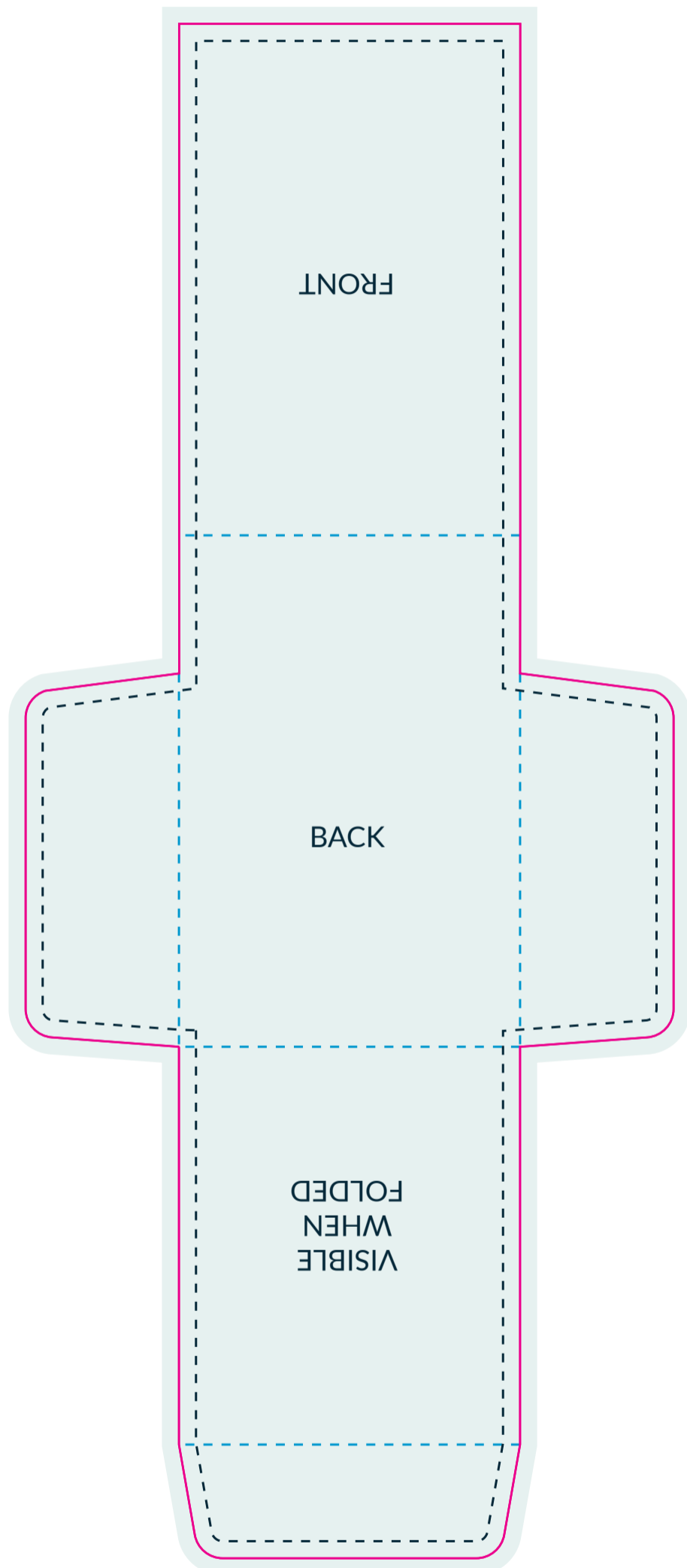


# Mini Envelope Card Sleeve

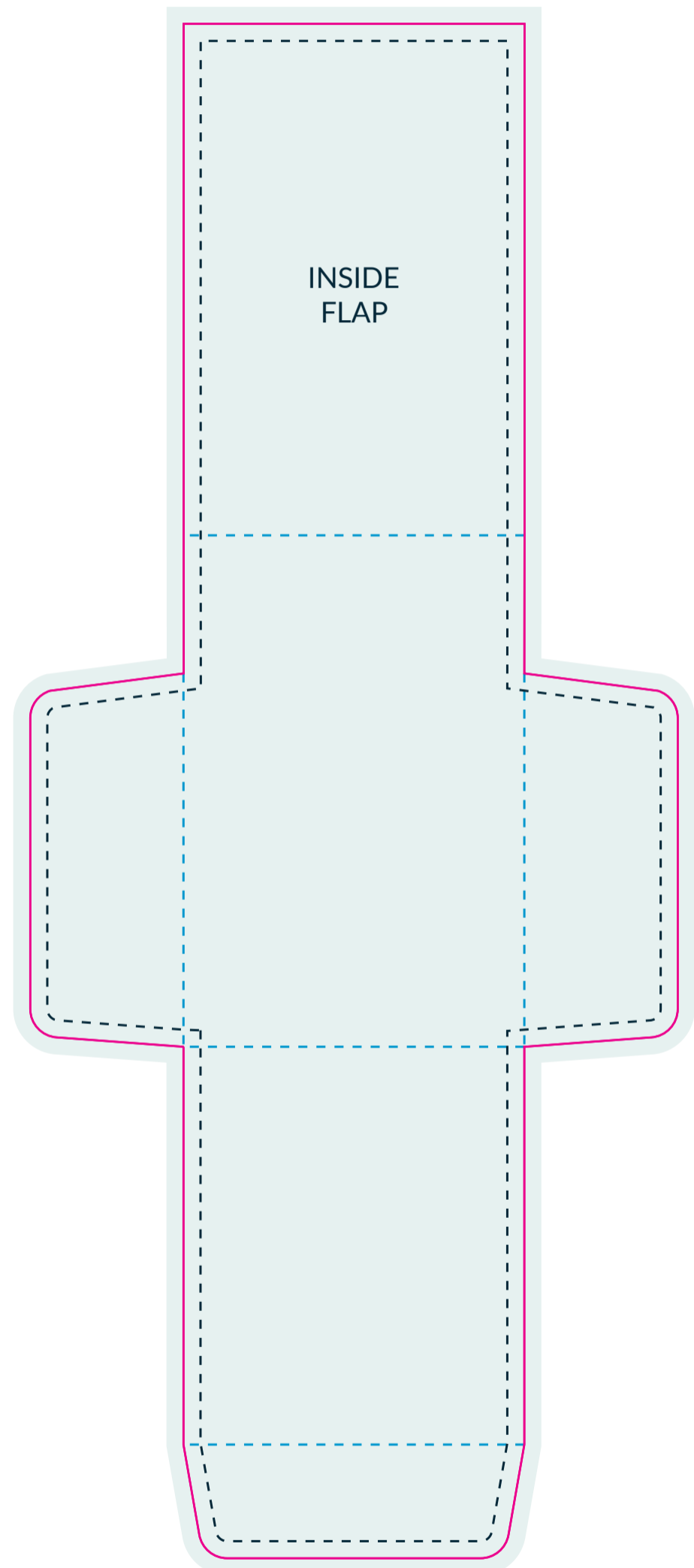
Flat Size 114mm x 270mm

Finish Size 60mm x 90mm

## OUTER ARTWORK



## INSIDE ARTWORK



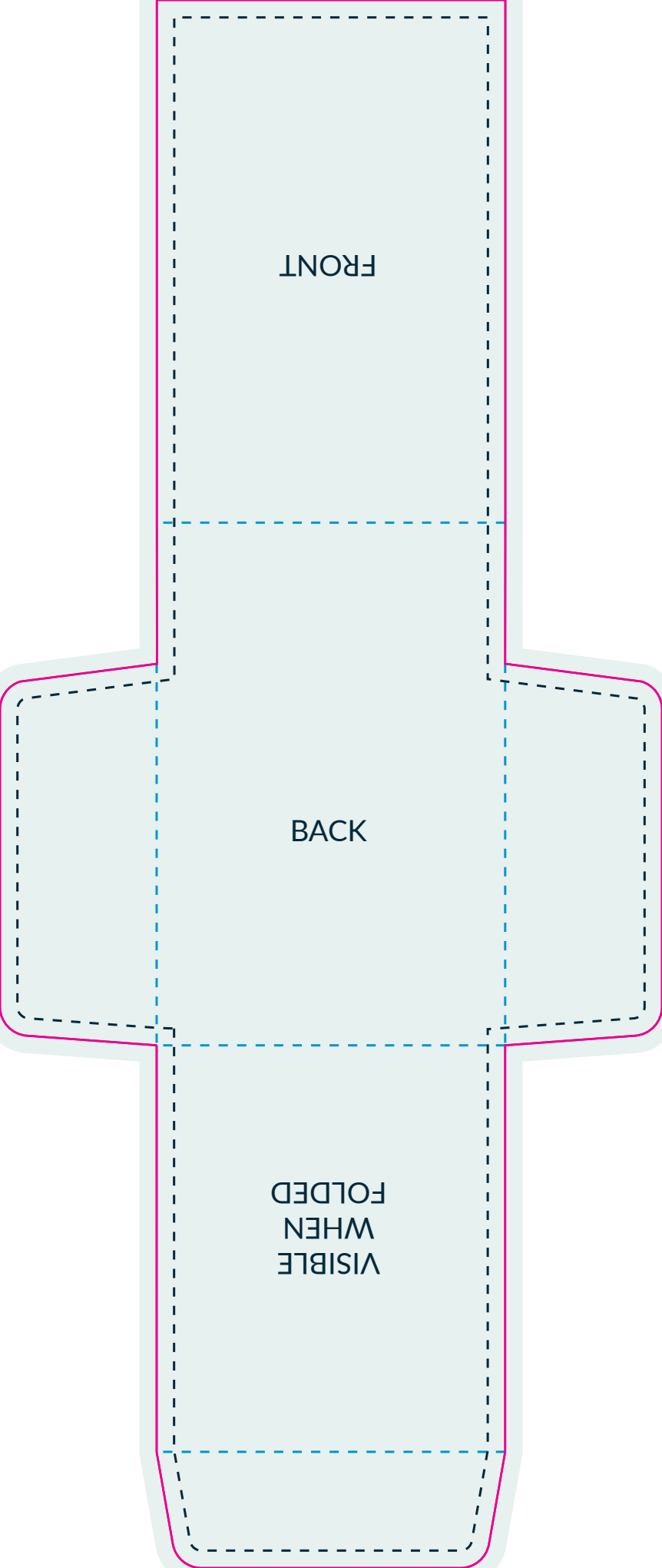
**Artwork is best created in Adobe Illustrator**

Please save as **illustrator .ai** or **(high quality print) .pdf**

### ARTWORK SPECIFICATIONS

- Create your artwork on the layer named "DESIGN"
- Make Blacks - Rich Black (C:20 M:20 Y:20 K:100)
- Artwork to be in CMYK (Full Colour) or PMS
- Check images are CMYK & 300dpi
- Allow 3mm bleed on artwork, No Crop Marks
- Keep dieline on a separate layer
- Package your working files for print OR
- Ensure all Fonts are outlined & images are embedded





FRONT

BACK

VISIBLE  
WHEN  
FOLDED

INSIDE  
FLAP