



# ARTWORK TEMPLATE

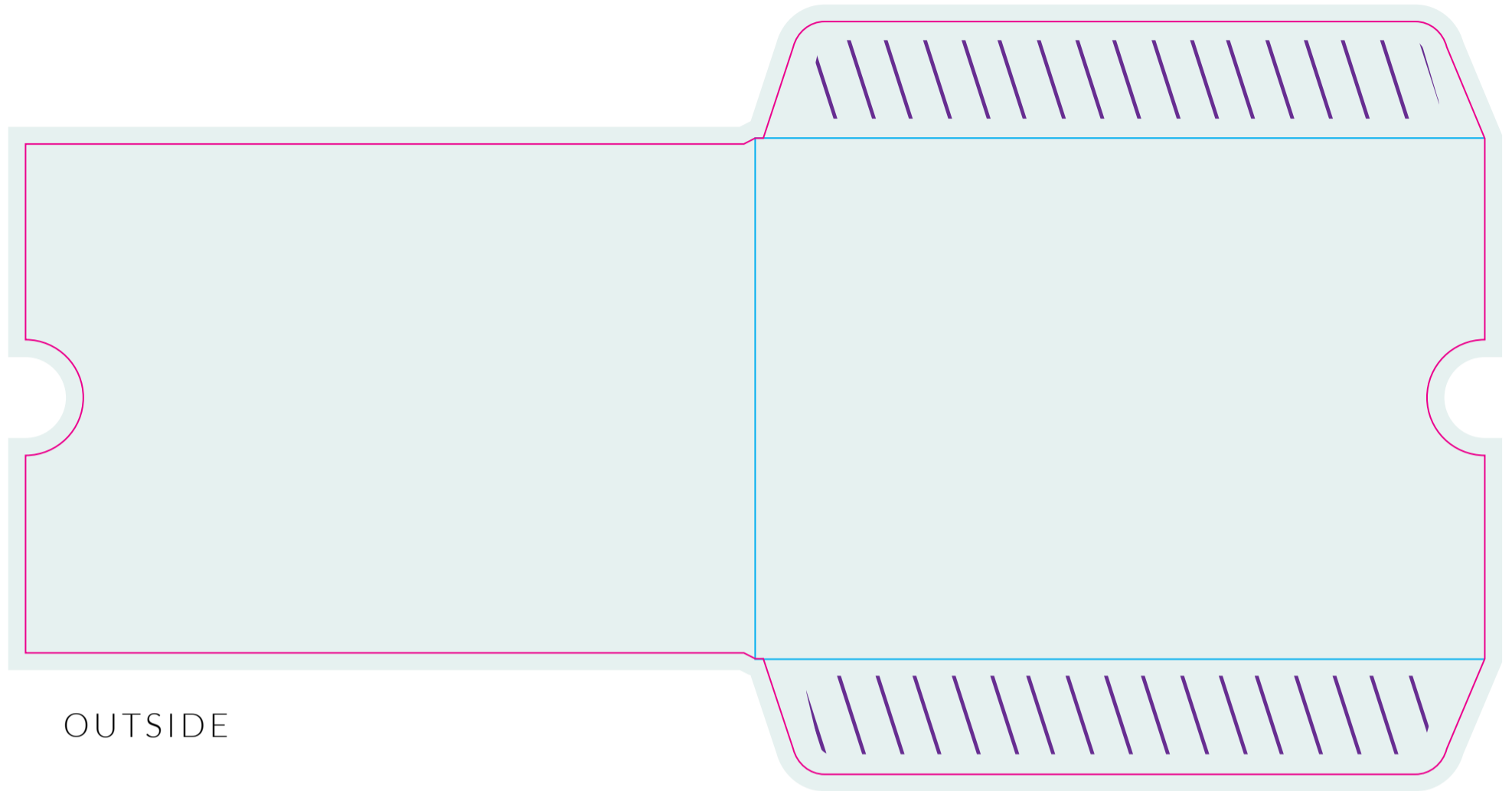
Large Sleeve with Small Hole  
and Sleeve Insert



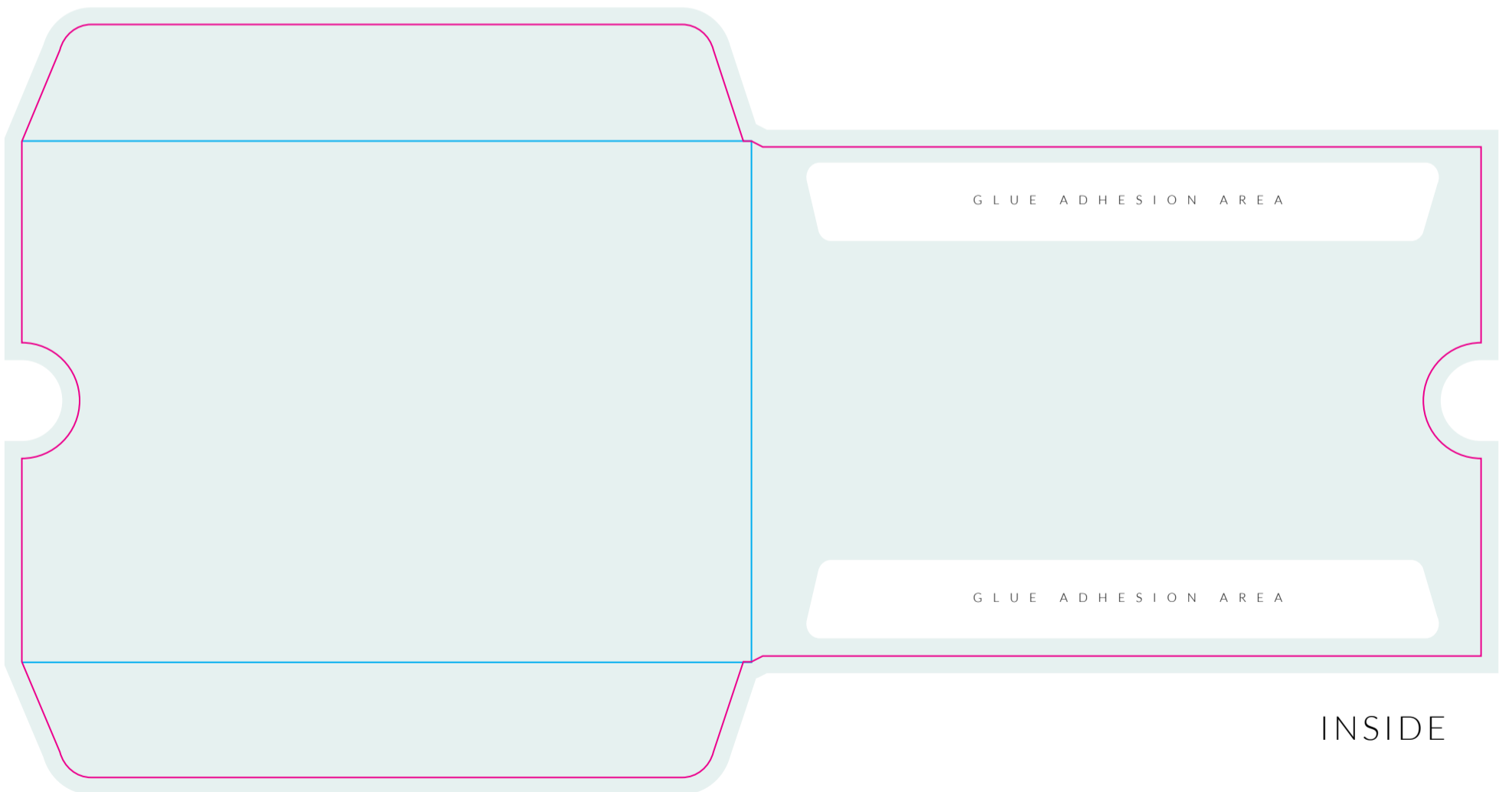
# Large Sleeve with Small Hole

Flat Size 252mm x 130mm

Finish Size 126mm x 90mm



OUTSIDE



INSIDE

**Artwork is best created in Adobe Illustrator**

Please save as illustrator .ai or (high quality print) .pdf

#### ARTWORK SPECIFICATIONS

- Create your artwork on the layer named "DESIGN"
- Make Blacks - Rich Black (C:20 M:20 Y:20 K:100)
- Artwork to be in CMYK (Full Colour) or PMS
- Check images are CMYK & 300dpi
- Allow 3mm bleed on artwork, No Crop Marks
- Keep dieline on a separate layer
- Package your working files for print OR
- Ensure all Fonts are outlined & images are embedded



DIELINE



GLUE AREA



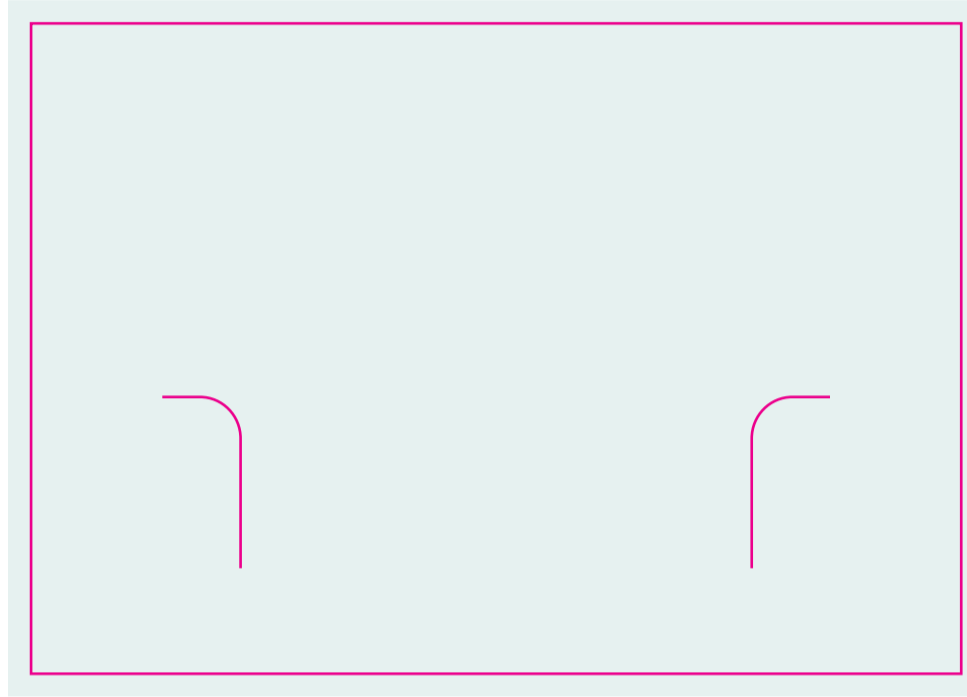
FOLD



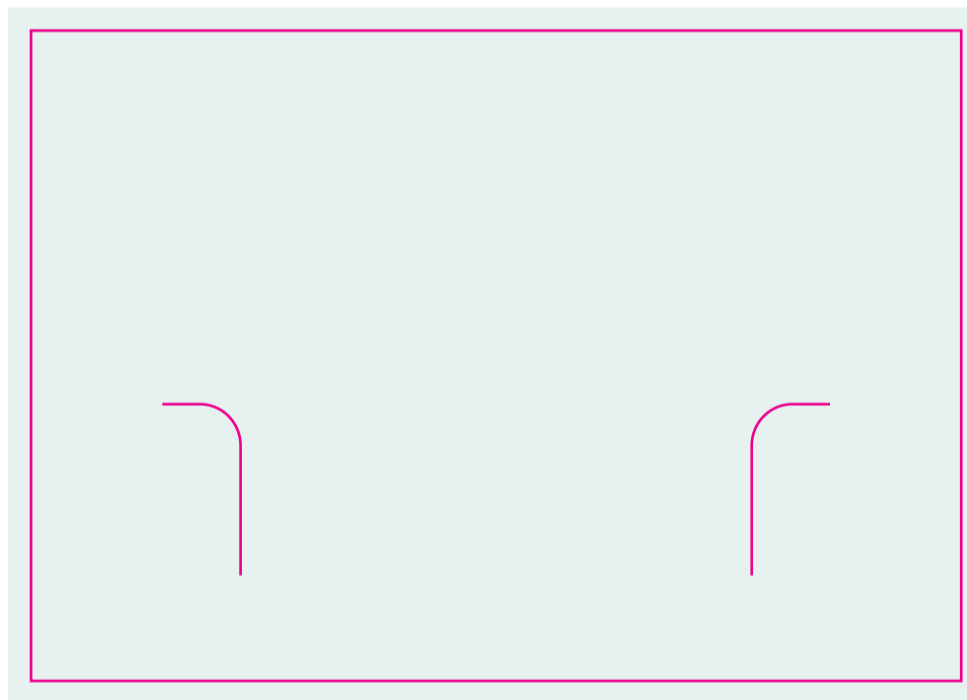
ARTWORK AREA INCLUDING BLEED

# Large Sleeve Insert

123mm x 86mm



FRONT



BACK

**Artwork is  
best created in  
Adobe Illustrator**

Please save as illustrator .ai  
or (high quality print) .pdf

#### ARTWORK SPECIFICATIONS

- Create your artwork on the layer named "DESIGN"
- Make Blacks - Rich Black (C:20 M:20 Y:20 K:100)
- Artwork to be in CMYK (Full Colour) or PMS
- Check images are CMYK & 300dpi
- Allow 3mm bleed on artwork, No Crop Marks
- Keep dieline on a separate layer
- Package your working files for print OR
- Ensure all Fonts are outlined & images are embedded



DIELINE



ARTWORK AREA  
INCLUDING BLEED