

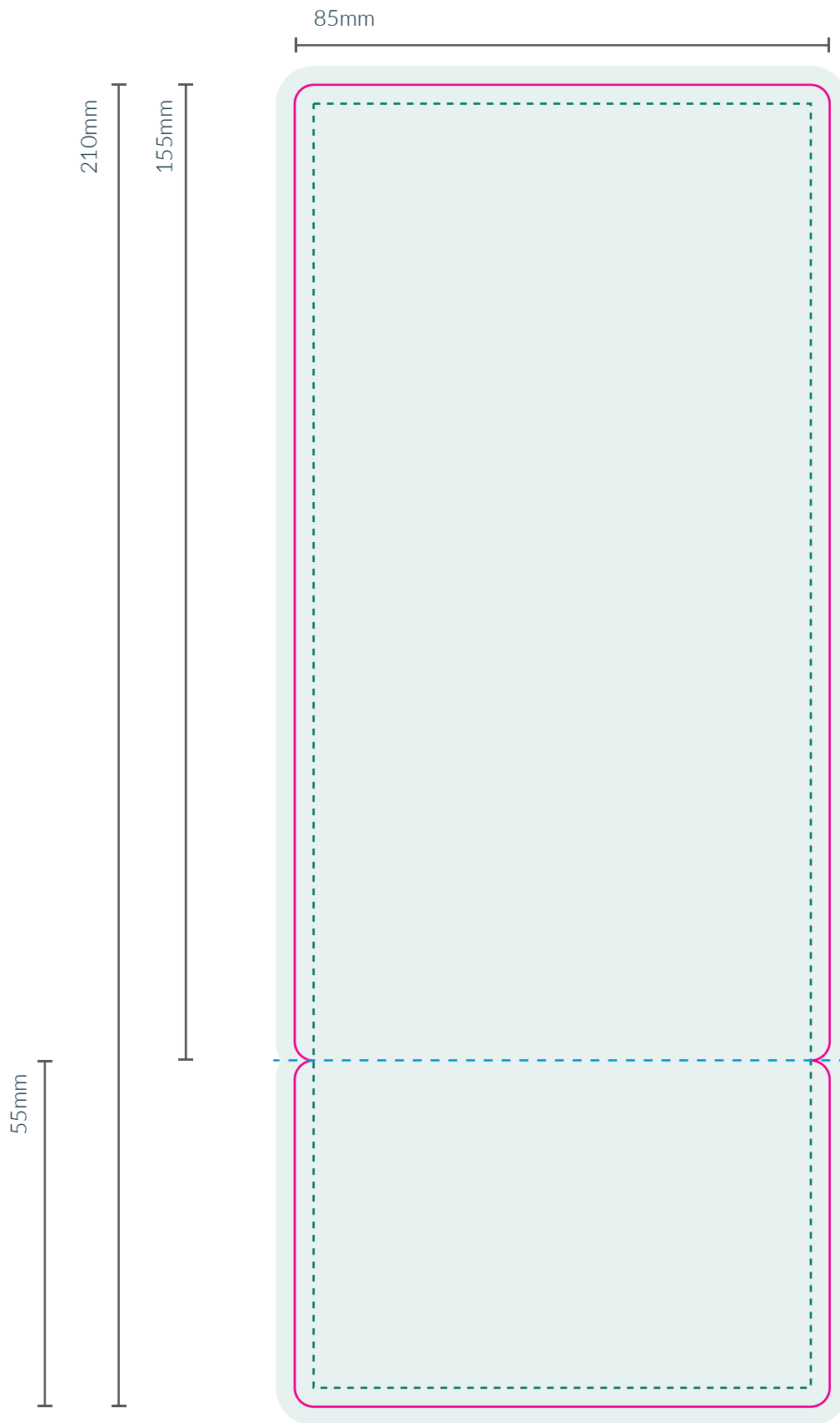
general artwork guidelines

- Artwork needs to be sized to **exact** dimensions shown above
- File needs to be provided in CMYK
- Special finishes should be shown on a **separate page** using a spot colour
- Fonts must be embedded or outlined
- Images must be at least 300dpi and embedded NOT linked
- Allow 3mm bleed on artwork (indicated by blue area)
- File must be a high resolution, multiple page pdf



**DELETE THE 'CPC TEMPLATE' LAYER
BEFORE SUBMITTING YOUR ARTWORK**

Tear Off Paper Card - 85mm x 210mm
FRONT



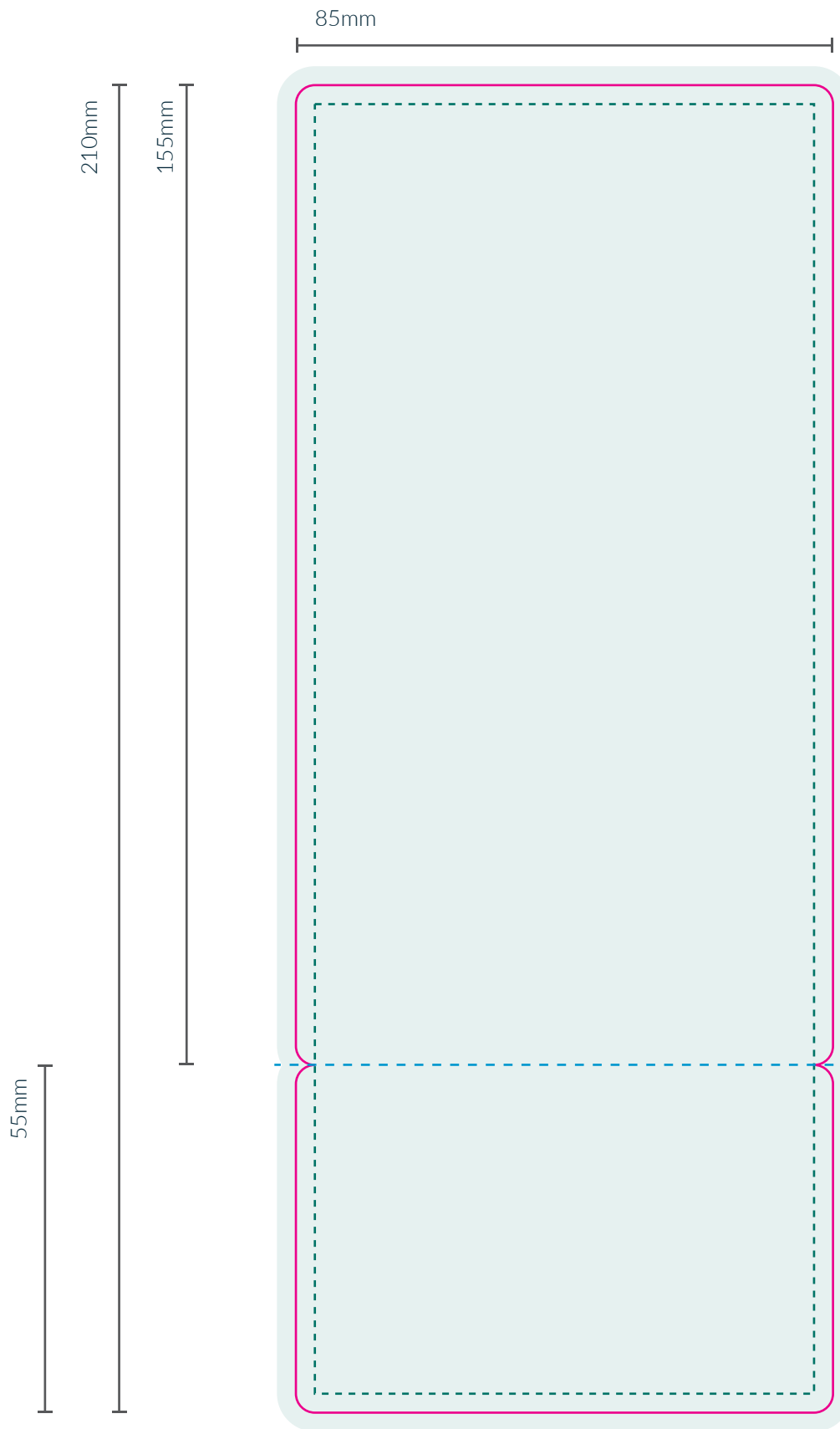
PAPER ARTWORK SPECIFICATIONS

- Create your artwork on the layer named "DESIGN"
- Artwork to be in CMYK (Full Colour) or PMS.
- Allow 3mm bleed on artwork, add CROP MARKS
- Keep text & graphics within the print safe area
- Dieline set as Spot/PMS colour or on a separate layer
- All Fonts outlined
- Check images are 300dpi and embedded, NOT linked
- File format must be hi-res PDF 10MB maximum file size

**Artwork is best created in
Adobe Illustrator or Indesign**

-  Dieline
-  Artwork Area
-  Print Safe Area
-  Perforation

Tear Off Paper Card - 85mm x 210mm
BACK



PAPER ARTWORK SPECIFICATIONS

- Create your artwork on the layer named "DESIGN"
- Artwork to be in CMYK (Full Colour) or PMS.
- Allow 3mm bleed on artwork, add CROP MARKS
- Keep text & graphics within the print safe area
- Dieline set as Spot/PMS colour or on a separate layer
- All Fonts outlined
- Check images are 300dpi and embedded, NOT linked
- File format must be hi-res PDF 10MB maximum file size

**Artwork is best created in
Adobe Illustrator or Indesign**

-  Dieline
-  Artwork Area
-  Print Safe Area
-  Perforation