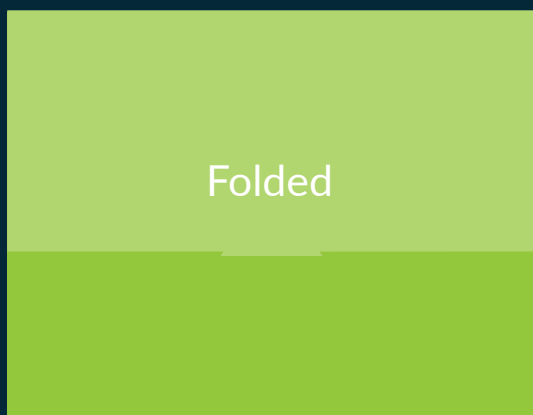




ARTWORK TEMPLATE

Envelope Card Wallet
with Arch Slits

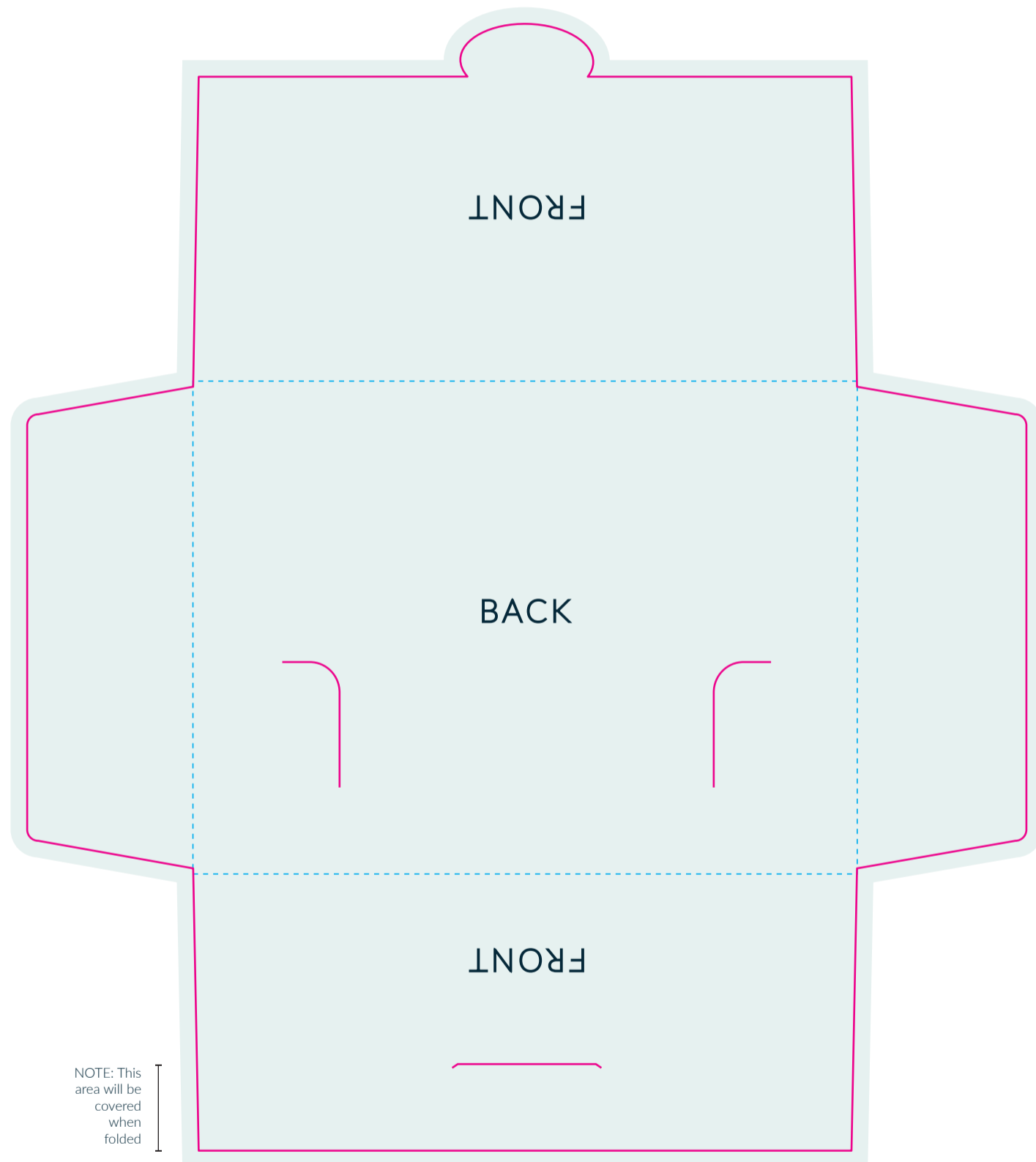


Envelope Card Wallet - with Arch Slits

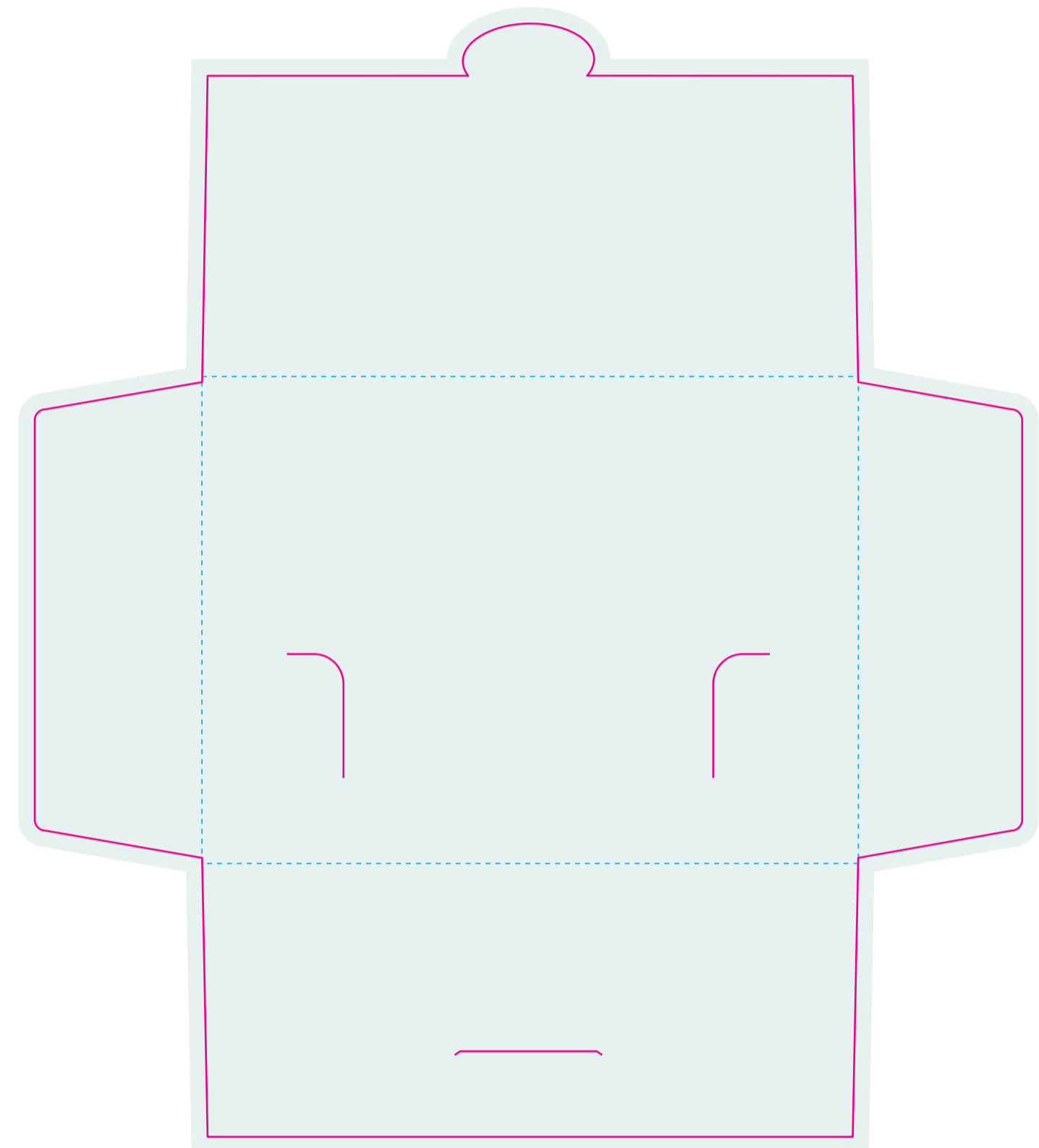
Folded Size: 120mm x 89mm

Flat Size: 180.5 x 203.5mm

OUTER ARTWORK



INSIDE ARTWORK



Artwork is best created in Adobe Illustrator

Please save as **illustrator .ai** or **(high quality print) .pdf**

ARTWORK SPECIFICATIONS

- Create your artwork on the layer named "DESIGN"
- Make Blacks - Rich Black (C:20 M:20 Y:20 K:100)
- Artwork to be in CMYK (Full Colour) or PMS
- Check images are CMYK & 300dpi
- Allow 3mm bleed on artwork, No Crop Marks
- Keep dieline on a separate layer
- Package your working files for print OR
- Ensure all Fonts are outlined & images are embedded



DIELINE



FOLD



ARTWORK AREA INCLUDING BLEED