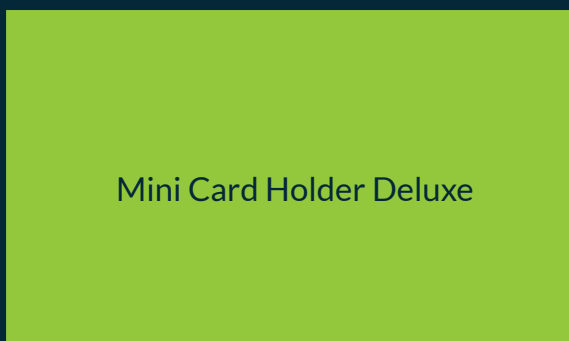


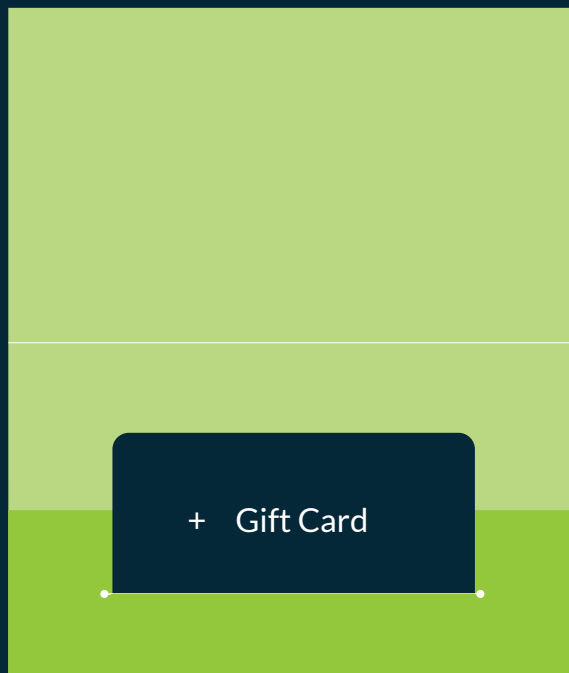


ARTWORK TEMPLATE

Mini Card Holder Deluxe



CLOSED VIEW - FRONT

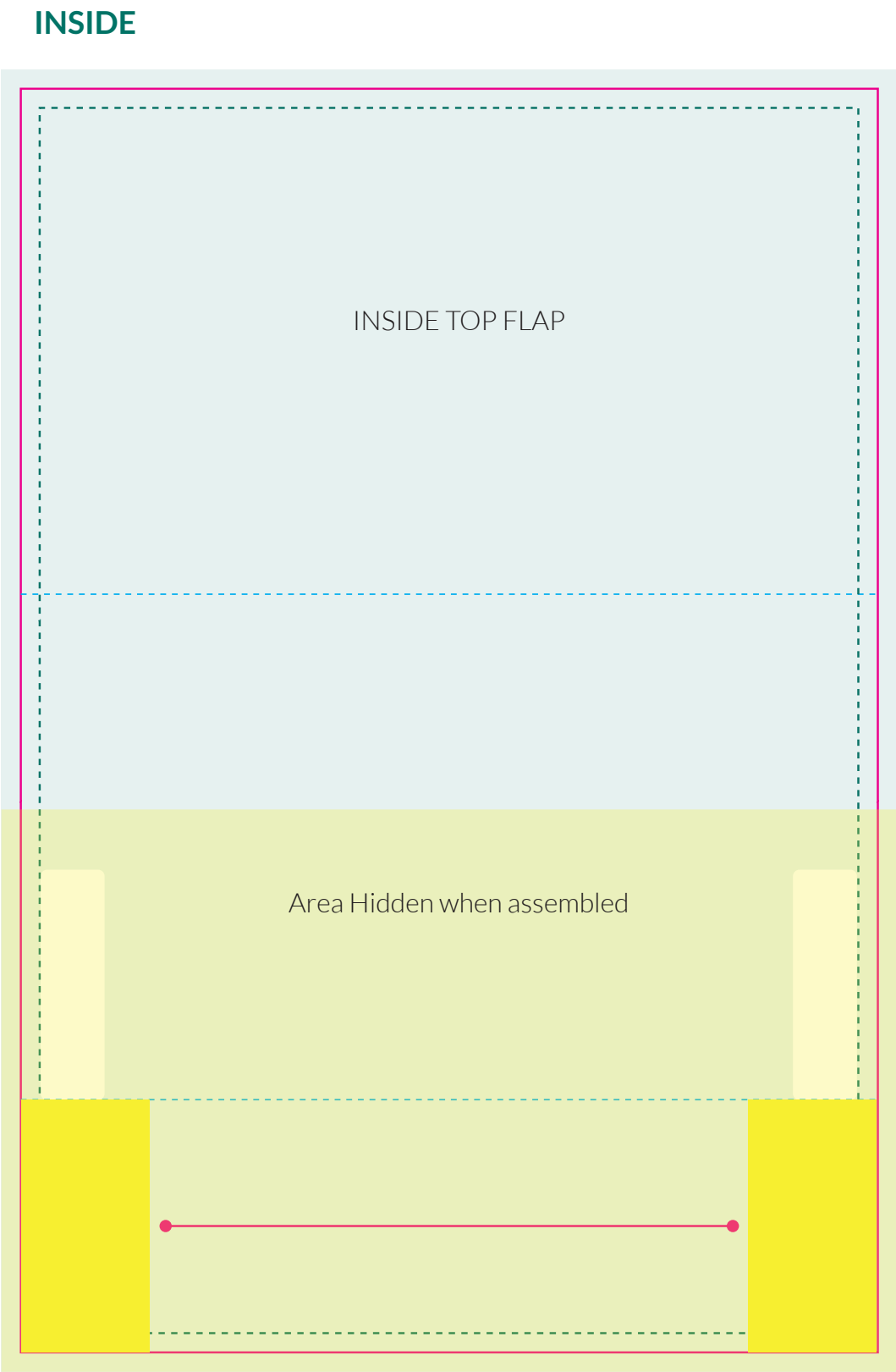
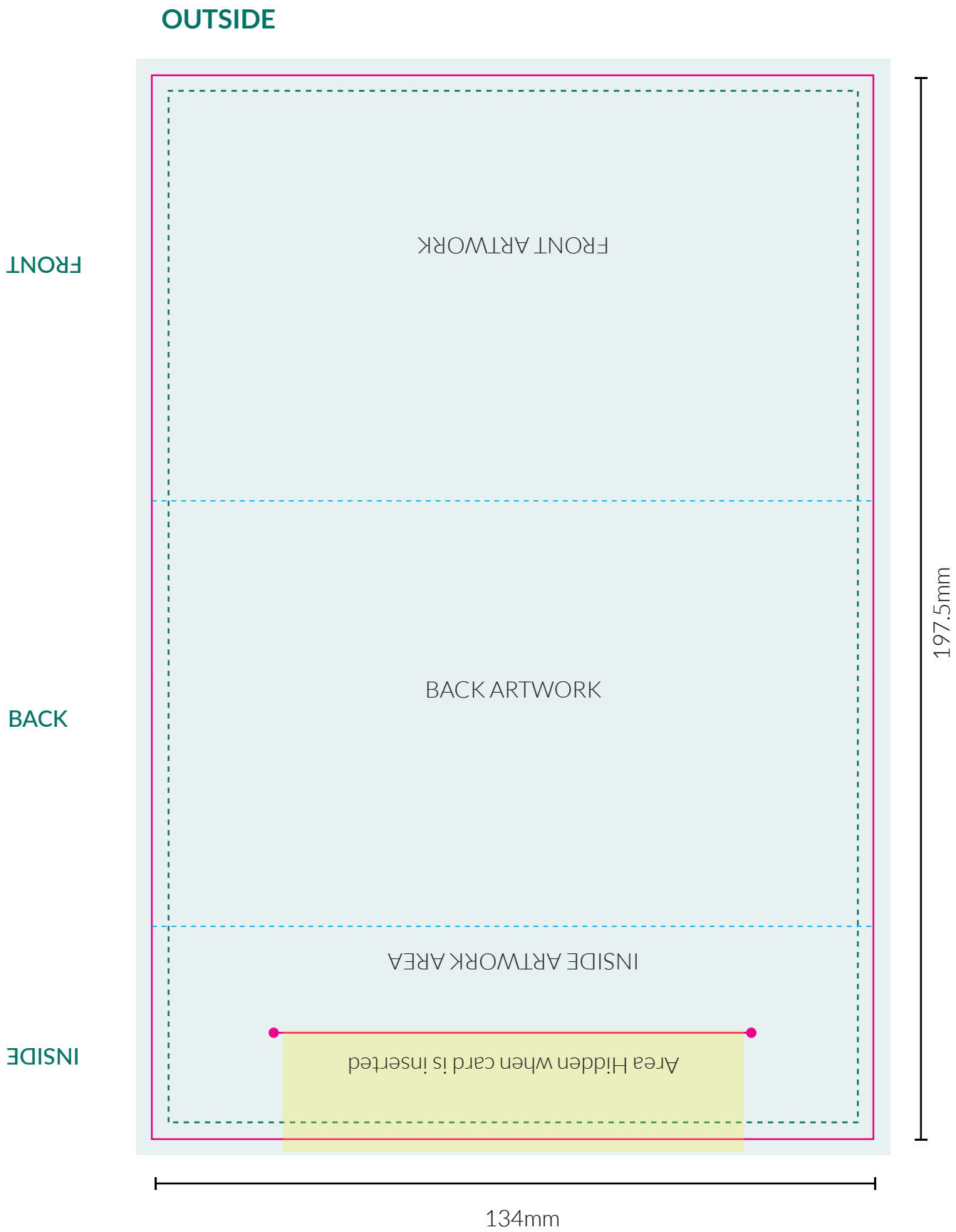


OPENED VIEW WITH CARD

Mini Card Holder Deluxe

Folded Size: 134 x 79mm

Flat Size: 134 x 197.5mm



**Artwork is
best created in
Adobe Illustrator**

Please save as **illustrator .ai**
or **(high quality print) .pdf**

ARTWORK SPECIFICATIONS

- Create your artwork on the layer named "DESIGN"
- Make Blacks - Rich Black (C:20 M:20 Y:20 K:100)
- Artwork to be in CMYK (Full Colour) or PMS
- Check images are CMYK & 300dpi
- Allow 3mm bleed on artwork, No Crop Marks
- Keep dieline on a separate layer
- Package your working files for print OR
- Ensure all Fonts are outlined & images are embedded



DIELINE



GLUE AREA



FOLD



ARTWORK AREA
INCLUDING BLEED

FRONT ARTWORK

BACK ARTWORK

INSIDE ARTWORK AREA

Area Hidden when card is inserted

INSIDE TOP FLAP

Area Hidden when assembled

