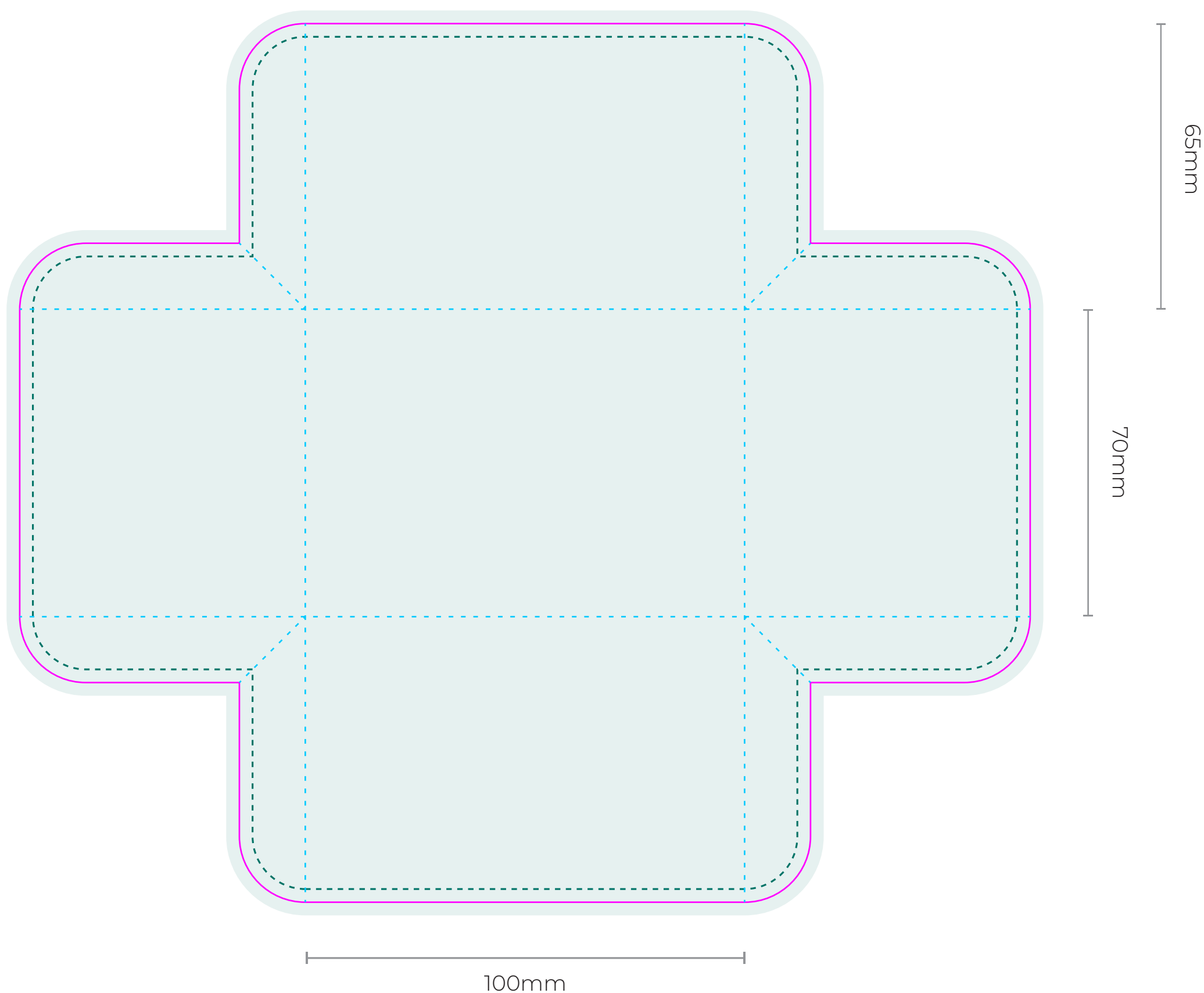


# Rectangle Gift Box

Base - Finished size 100mm x 70mm x 65mm

PAGE 1/4


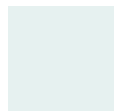


## OUTER ARTWORK



### PAPER ARTWORK SPECIFICATIONS

- Create your artwork on the layer named "DESIGN"
- Artwork to be in CMYK (Full Colour)
- Allow 3mm bleed on artwork, add CROP MARKS
- Keep text & graphics within the print safe area
- Dieline set as Spot/PMS colour or on a separate layer
- All Fonts outlined
- Check images are 300dpi and embedded, NOT linked
- File format must be hi-res PDF 10MB maximum file size

Artwork is best created in  
**Adobe Illustrator or Indesign**

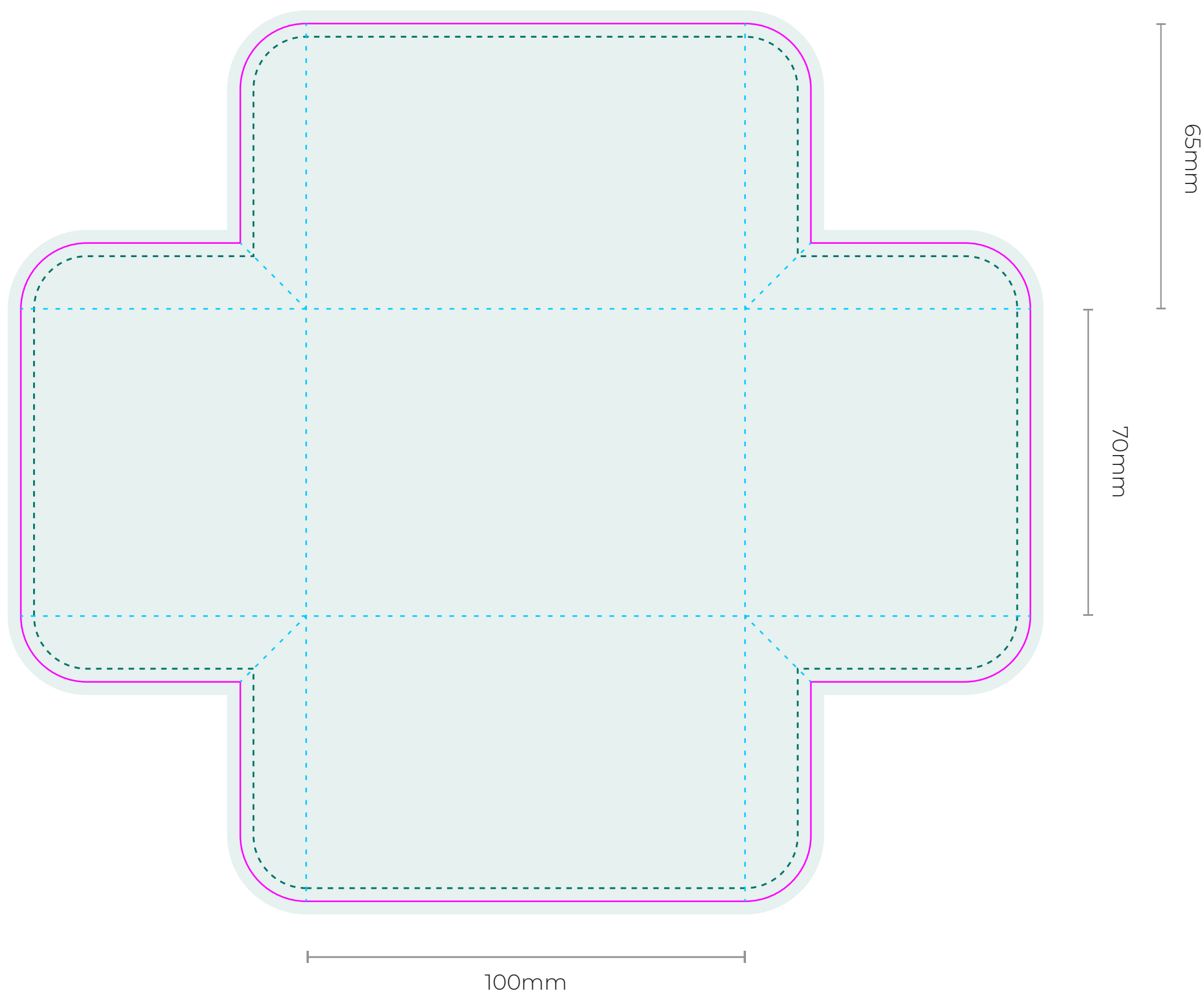
-  Dieline
-  Artwork Area
-  Print Safe Area
-  Fold/Score

## Rectangle Gift Box

Base - Finished size 100mm x 70mm x 65mm

PAGE 2/4


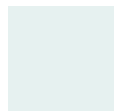


### INSIDE ARTWORK



#### PAPER ARTWORK SPECIFICATIONS

- Create your artwork on the layer named "DESIGN"
- Artwork to be in CMYK (Full Colour)
- Allow 3mm bleed on artwork, add CROP MARKS
- Keep text & graphics within the print safe area
- Dieline set as Spot/PMS colour or on a separate layer
- All Fonts outlined
- Check images are 300dpi and embedded, NOT linked
- File format must be hi-res PDF 10MB maximum file size

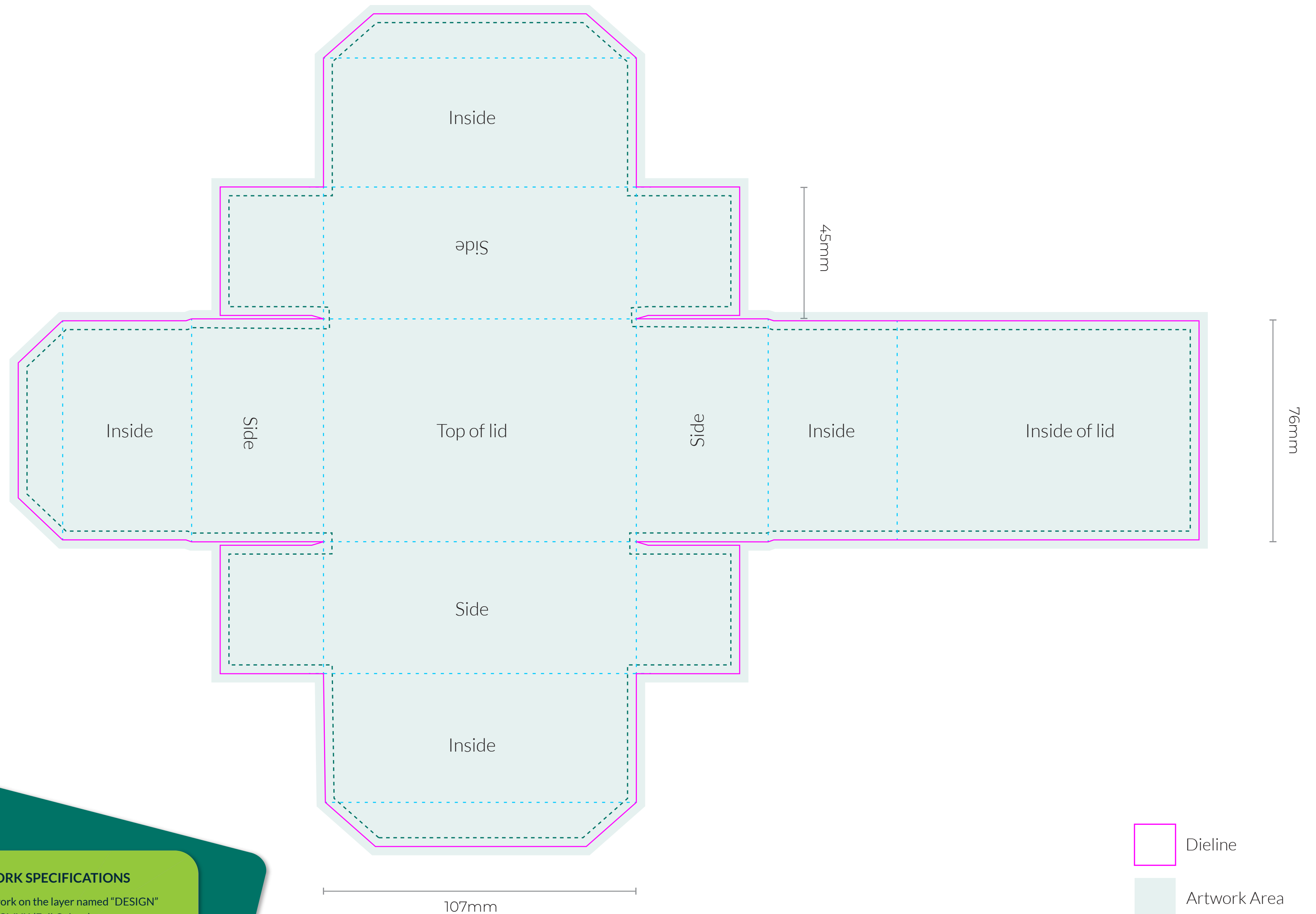
Artwork is best created in  
**Adobe Illustrator or Indesign**

-  Dieline
-  Artwork Area
-  Print Safe Area
-  Fold/Score

# Rectangle Gift Box

Lid - Finished size 107mm x 76mm x 45mm

PAGE 3/4



## PAPER ARTWORK SPECIFICATIONS

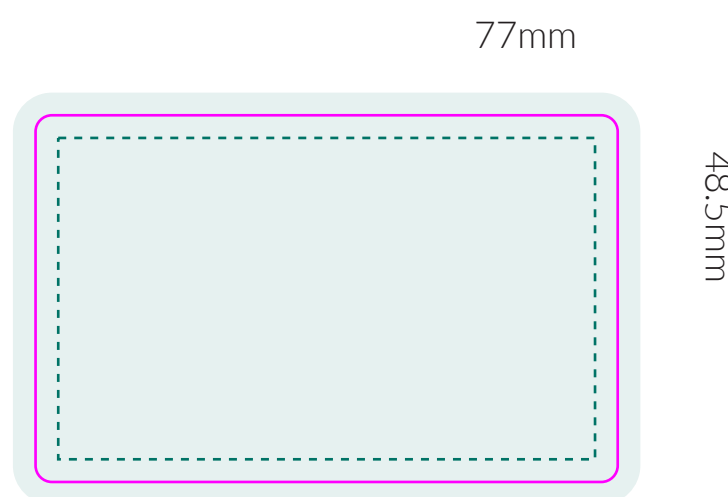
- Create your artwork on the layer named "DESIGN"
- Artwork to be in CMYK (Full Colour)
- Allow 3mm bleed on artwork, add CROP MARKS
- Keep text & graphics within the print safe area
- Dieline set as Spot/PMS colour or on a separate layer
- All Fonts outlined
- Check images are 300dpi and embedded, NOT linked
- File format must be hi-res PDF 10MB maximum file size

Artwork is best created in  
Adobe Illustrator or Indesign

- Dieline
- Artwork Area
- Print Safe Area
- Fold/Score

Christmas Complimentary Tag  
77mm x 48.5mm  
Single Sided

PAGE 4/4



#### PLASTIC CARD ARTWORK SPECIFICATIONS

- Create your artwork on the layer named "DESIGN"
- Artwork to be in CMYK (Full Colour)
- Allow 3mm bleed on artwork, NO crop marks
- Keep text & graphics within the print safe area
- Dieline set as Spot/PMS colour or on a separate layer
- All Fonts outlined
- Check images are 300dpi and embedded, NOT linked
- File format must be **hi-res PDF** 10MB maximum file size

Artwork is best created in  
**Adobe Illustrator or Indesign**

